



Thomas A. Paul, ABB Corporate Research, Switzerland

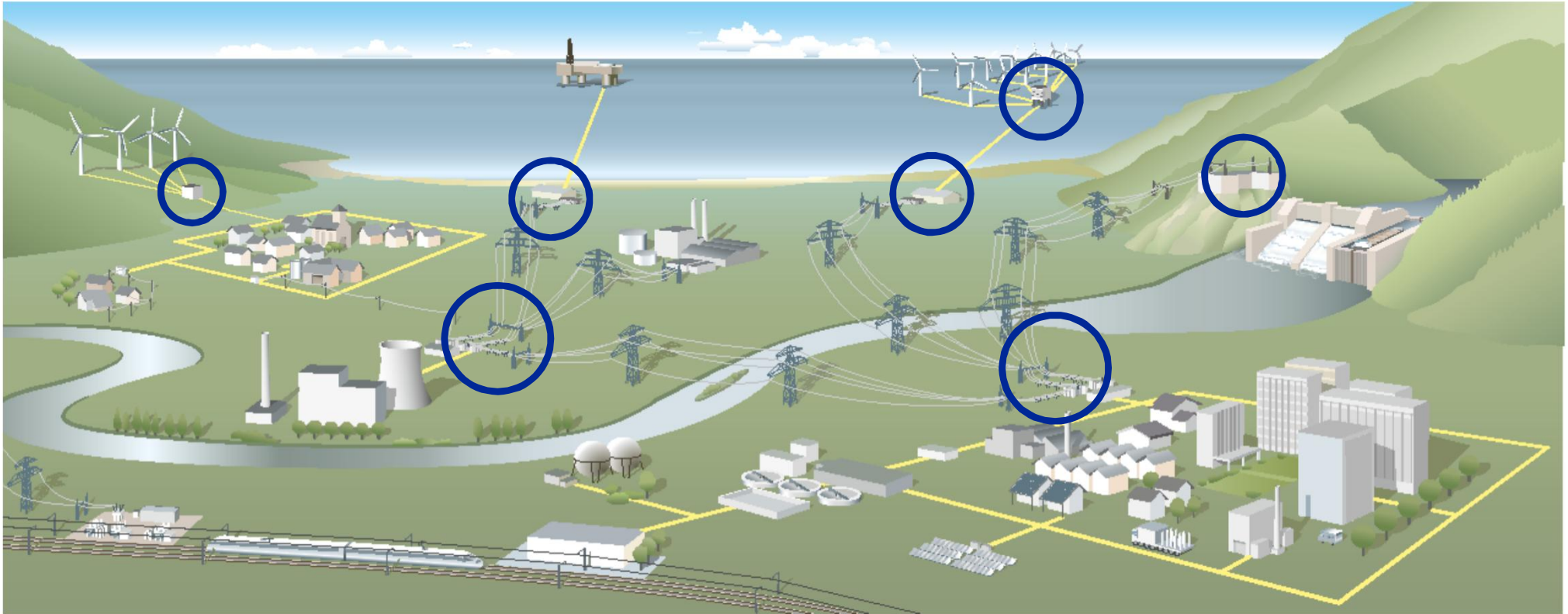
Optical technologies in the power industry: Monitoring and diagnosis of gas-insulated electrical switchgear

Outline

- Electrical switchgear and gas insulation
- Insulation gas diagnostics for SF₆
- Insulation gas diagnostics for SF₆-alternatives

Electrical Switchgear

- Essential components for energy transmission and distribution.
- Necessary at every switching point in the electrical power grid.
- Switching devices are associated with control, protection and metering of power systems.

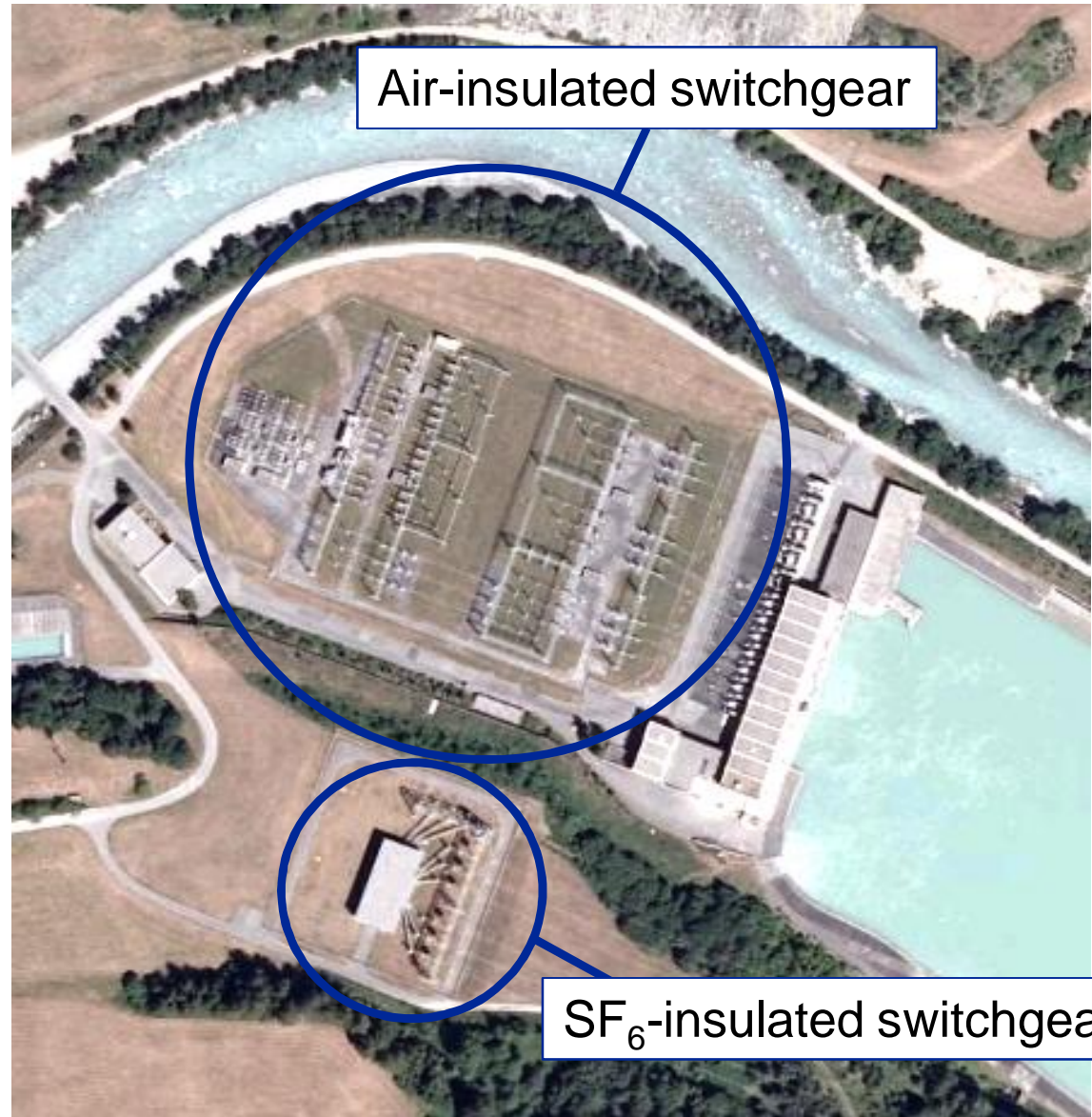


Electrical Switchgear

- Air-insulated substations have large space requirement
- Significant reduction in footprint through use of potent insulation gases – the best is SF₆.



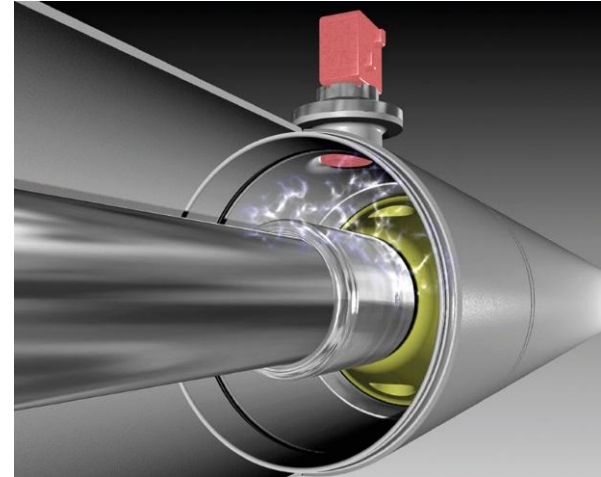
ABB's ELK-3 GIS



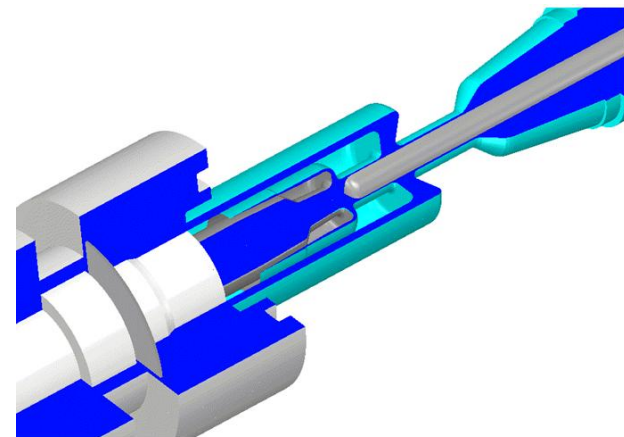
380kV GIS and AIS, Pradella CH

SF₆ as insulation gas

- During operation, the gas composition can change
 - Humidity ingress through seals and from outgassing
 - Arc-induced decomposition during switching
 - Partial discharge induced decomposition
- Decomposition products can be toxic and corrosive, and impede operability and safety of switchgear.



Partial discharge [image from www.think-grid.org]



SF₆ HV circuit breaker, M. Abrahamsson, ABB

Insulation gas diagnostics

- Permanent monitoring devices
 - Density and *T*-compensated pressure
 - Humidity
- Off-line, extractive devices
 - Humidity
 - Complete gas composition
- Leakage detection



Optical chilled mirror dewpoint meter, MBW



SF₆ sniffer, CPS



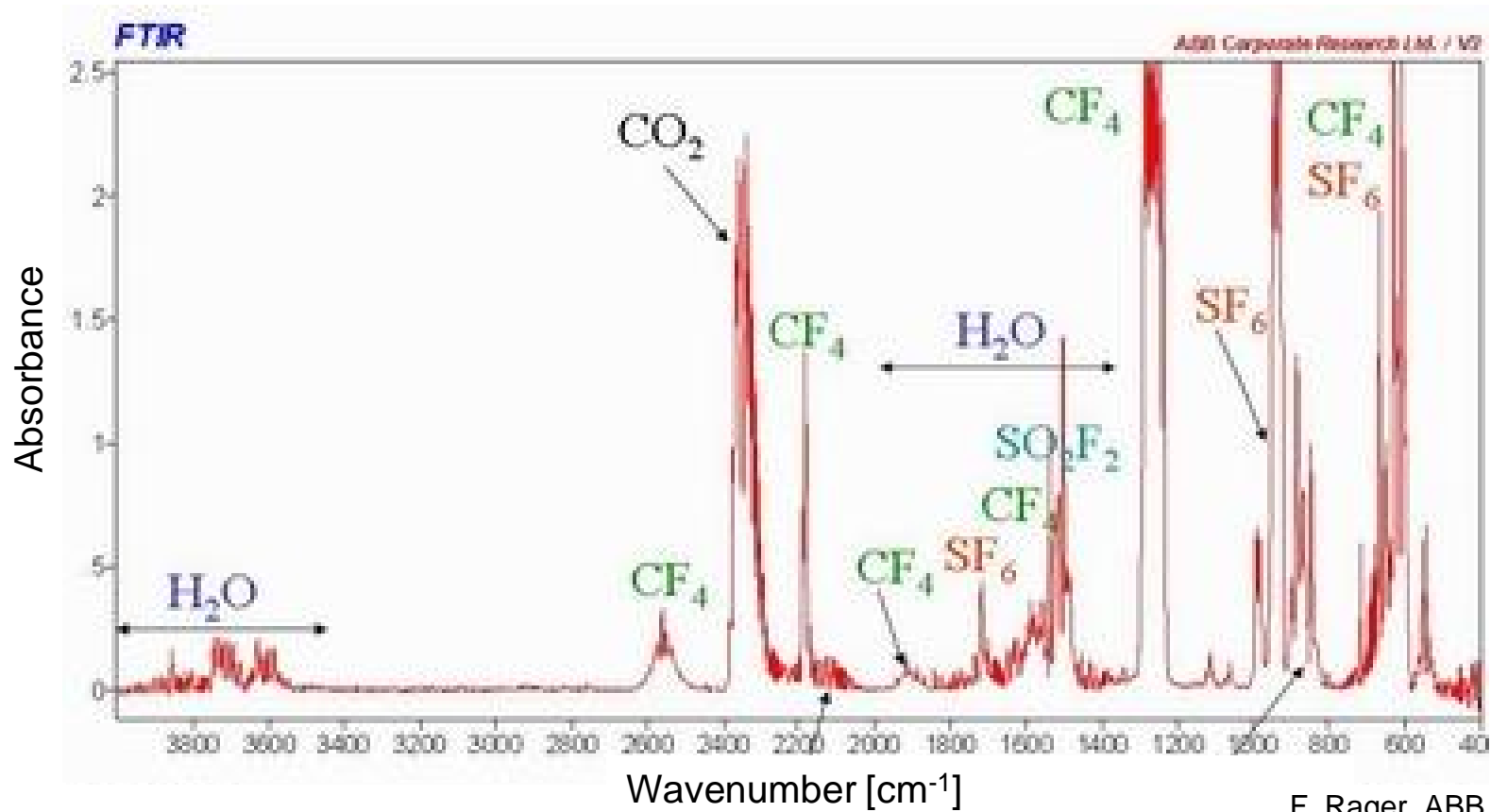
Humidity sensor on a GIS, Vaisala



Gas analysis on a DTB, V. Williams, Company EMT

Optical instruments for switchgear diagnosis

- SF₆ and many decomposition products offer IR signatures
- These are conveniently used for gas diagnostics



Commercial optical instruments for switchgear diagnosis

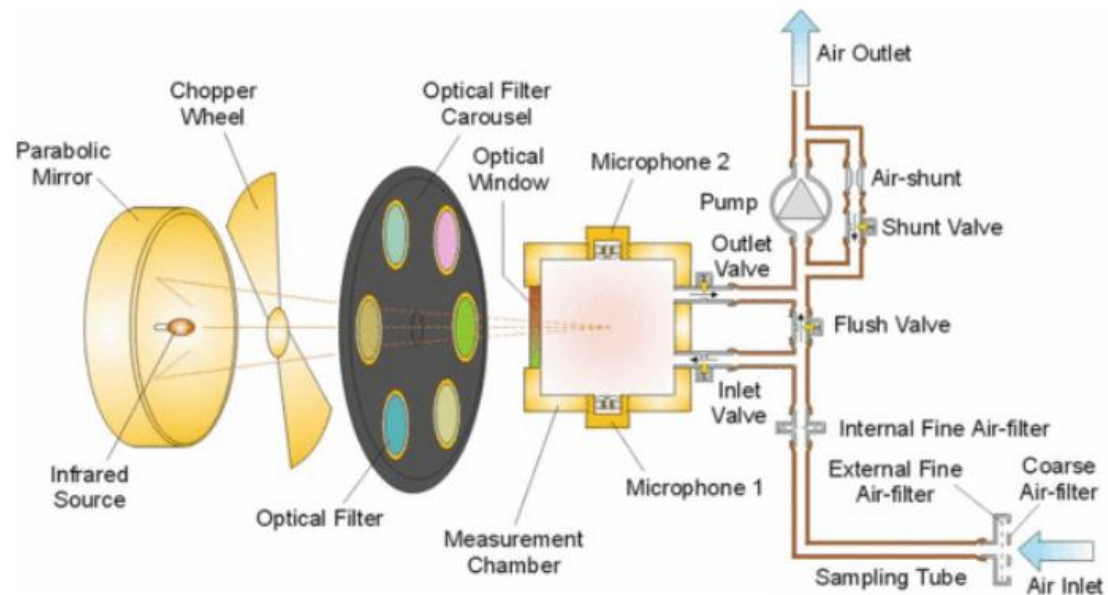
- Multi-component analysis
 - Gas composition analysis
 - Sampling & pump-back
- Integral leakage detection
 - Photoacoustic sensors
 - IR imaging



Innova-Lumasense



IR SF₆ analyzers, EMT



IR photoacoustic SF₆ analyzers, Innova-Lumasense

SF₆-alternatives: insulation gas *mixtures*

- Alternatives to SF₆ are based on gas *mixtures*
- Fluorinated organics (FOs) have high break-down strength
- Performance of SF₆-alternatives strongly depends on composition
- Composition is prone to change
 - Consumption in arc
 - Condensation
 - Other undesired processes,

Press Release

ABB

ABB achieves breakthrough in switchgear technology with eco-efficient insulation gas

New gas mixture offers alternative to SF₆ and has potential to reduce carbon footprint of GIS by up to 50 percent – technology to be deployed in a Swiss pilot project.

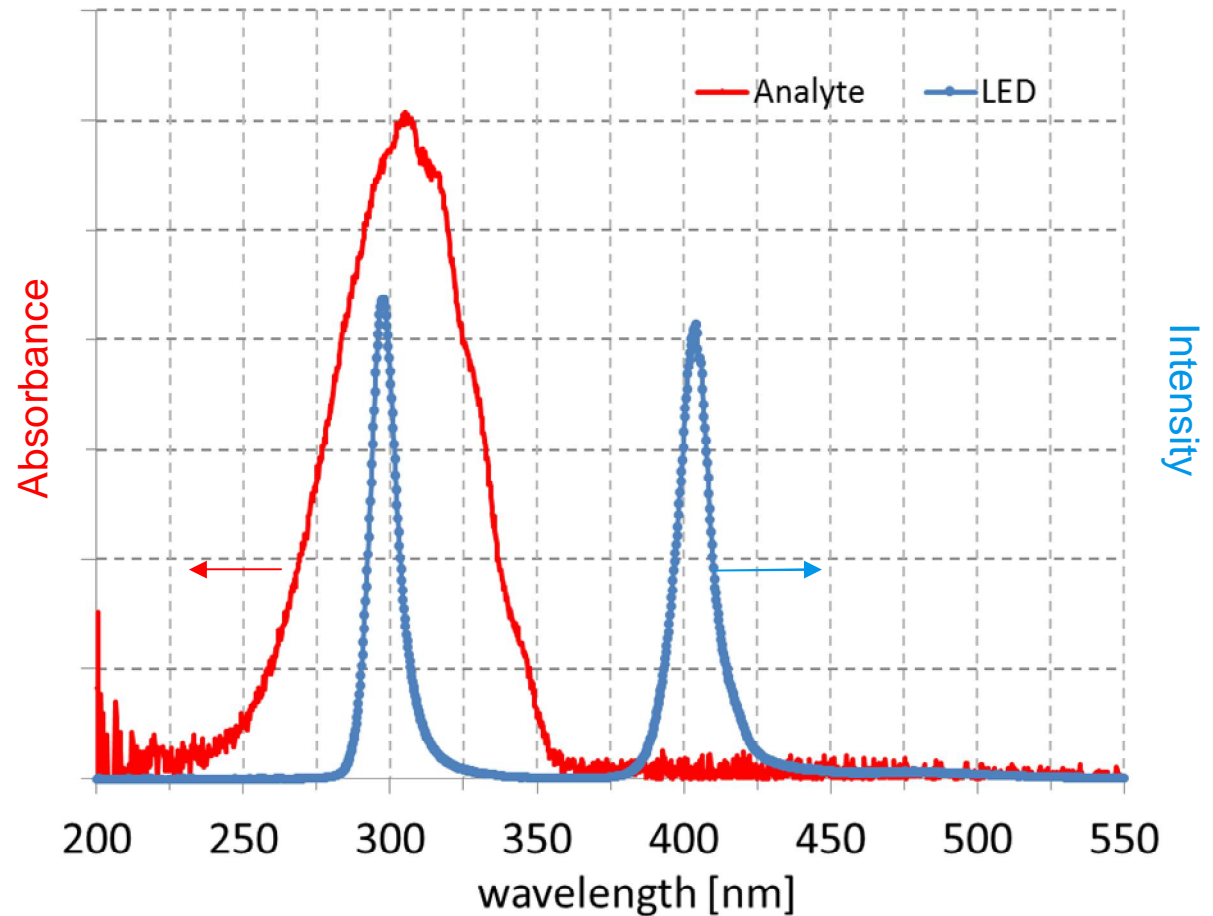


New measurement instrumentation needed

ABB

Optical monitoring of SF₆-alternatives in switchgear

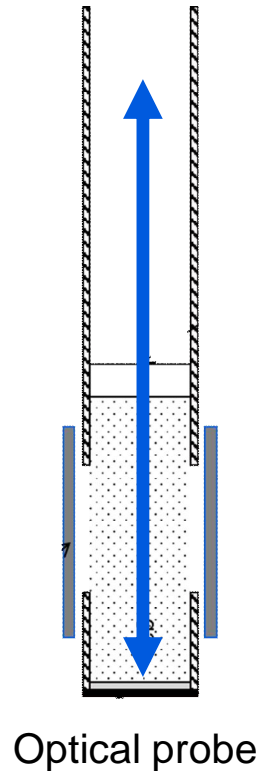
- Characteristic UV bands available for FOs
- UV LEDs available down to 200 nm with small bandwidth
- Can use straight-forward absorption measurement



A. Kramer, ABB

Optical monitoring of SF₆-alternatives in switchgear

- Challenging measurement environment
 - Dust
 - Vibration
 - Corrosive gases
- Optical absorption measurement nevertheless viable
- Accuracy better than 1% of measured concentration



A. Kramer and
M. Porus, ABB

Summary

- Optical technologies are used widely for insulation gas diagnosis
- Diagnosis instrumentation is established for most aspects related to the use of SF₆
- SF₆-alternatives require new solutions



Power and productivity
for a better world™

